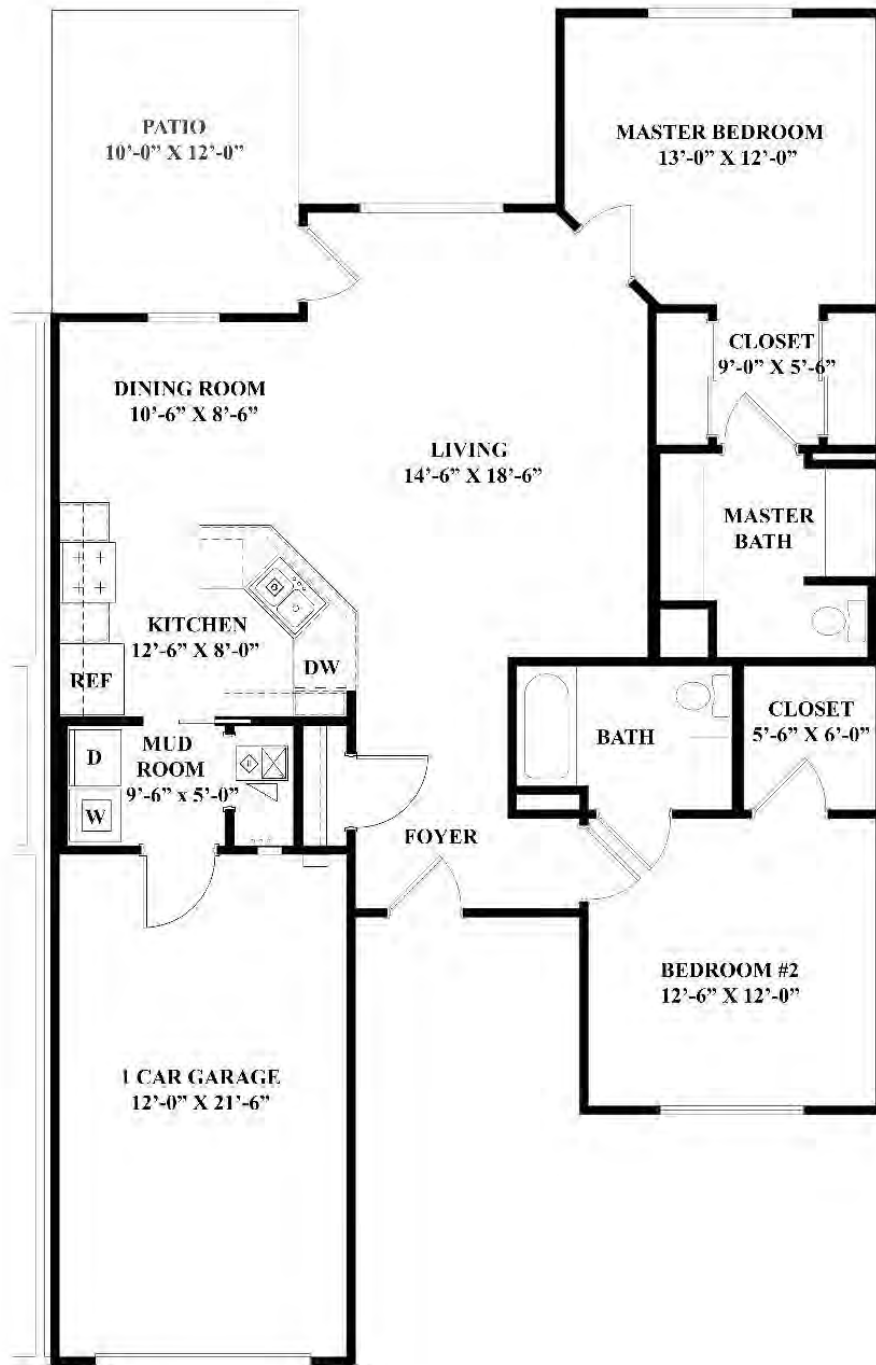


Hayes

1204 Square Footage



Entrance Fee _____

2nd Person Fee _____

Total Entrance Fee _____

Monthly Service Fee _____

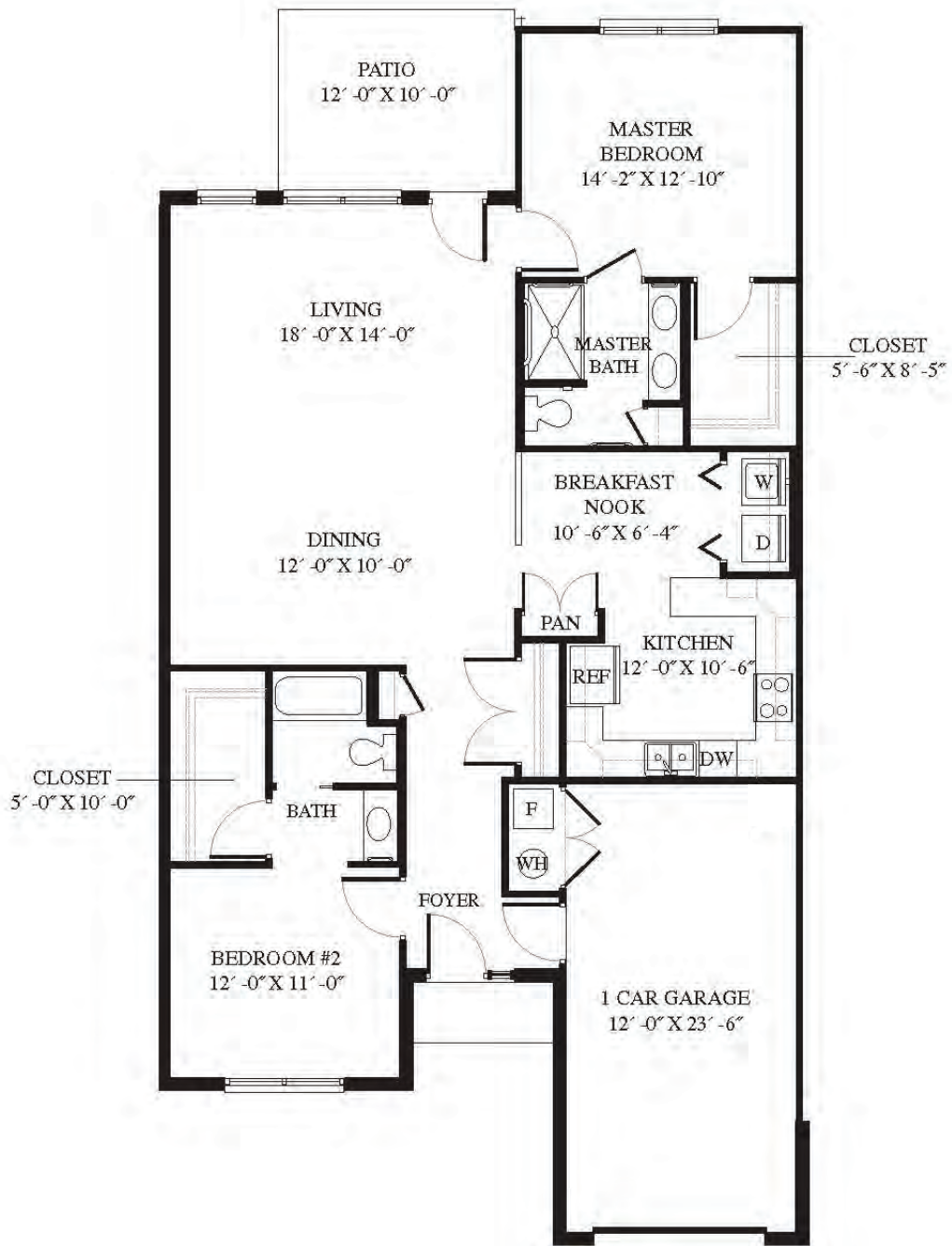
Note: All dimensions are approximate.

5343 Hamilton Avenue | Cincinnati, OH 45224 | 513-853-2000 | www.lec.org



Garfield - Interior

1495 Square Footage



Entrance Fee _____

2nd Person Fee _____

Total Entrance Fee _____

Monthly Service Fee _____

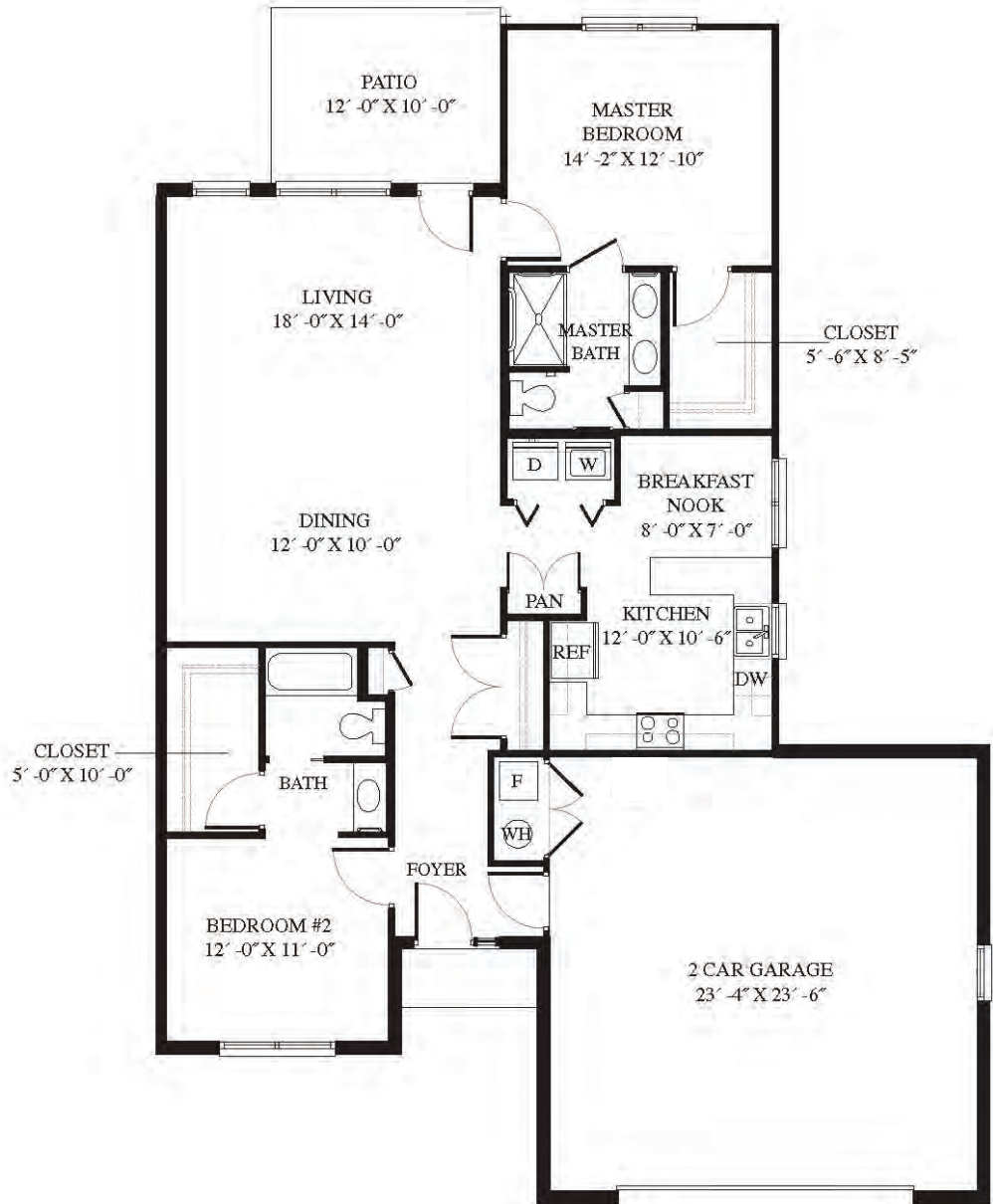
Note: All dimensions are approximate.

5343 Hamilton Avenue | Cincinnati, OH 45224 | 513-853-2000 | www.lec.org



Garfield - End Home Plan

1495 Square Footage



Entrance Fee _____
 2nd Person Fee _____
 Total Entrance Fee _____
 Monthly Service Fee _____

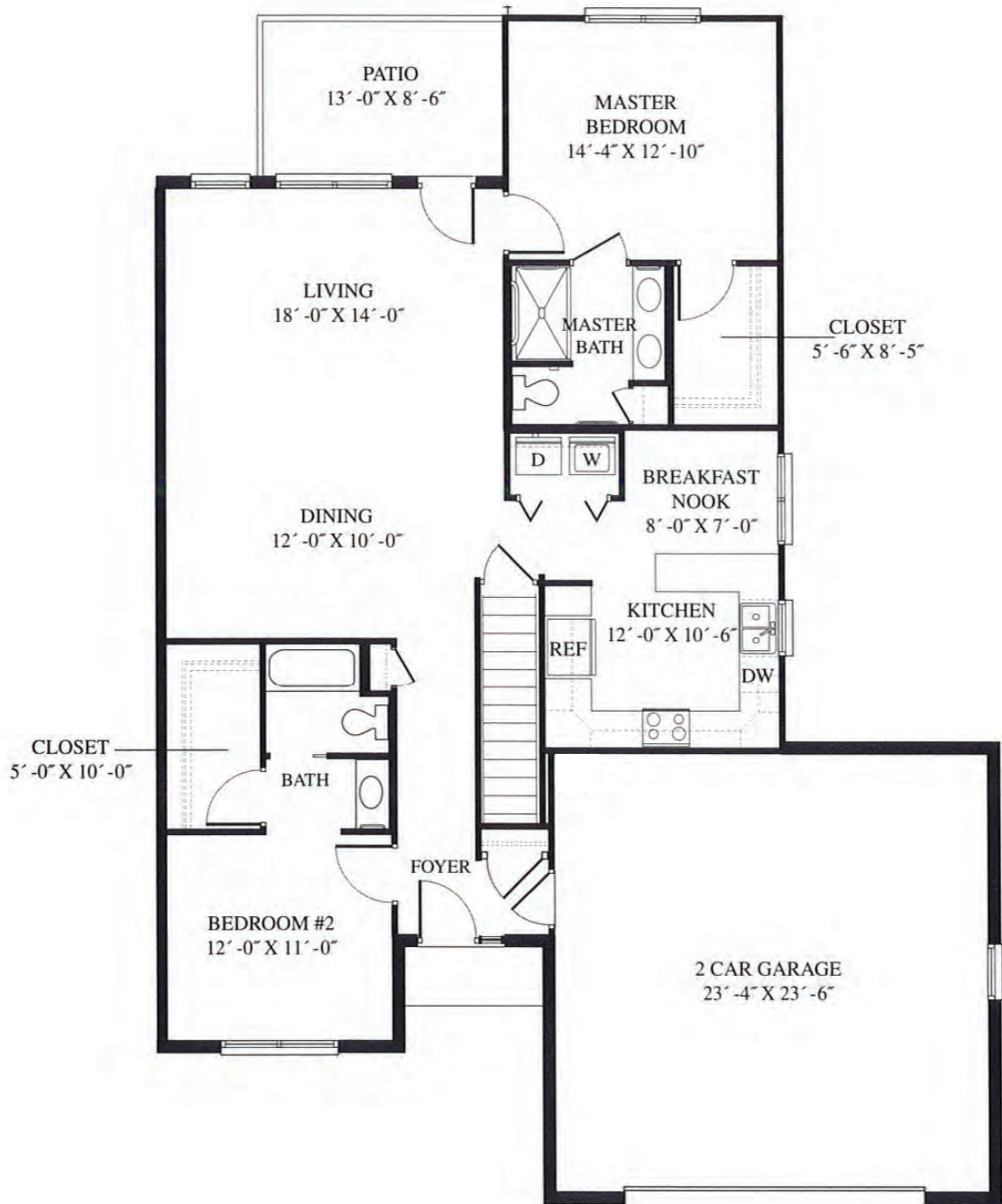
Note: All dimensions are approximate.

5343 Hamilton Avenue | Cincinnati, OH 45224 | 513-853-2000 | www.lec.org



Garfield

With Basement 1495 Square Footage



Entrance Fee _____
 2nd Person Fee _____
 Total Entrance Fee _____
 Monthly Service Fee _____

Note: All dimensions are approximate.

5343 Hamilton Avenue | Cincinnati, OH 45224 | 513-853-2000 | www.lec.org



Harding

1544 Square Footage



Entrance Fee _____
 2nd Person Fee _____
 Total Entrance Fee _____
 Monthly Service Fee _____

Note: All dimensions are approximate.

5343 Hamilton Avenue | Cincinnati, OH 45224 | 513-853-2000 | www.lec.org



Harding

With Basement - 1544 Square Footage



Entrance Fee _____
 2nd Person Fee _____
 Total Entrance Fee _____
 Monthly Service Fee _____

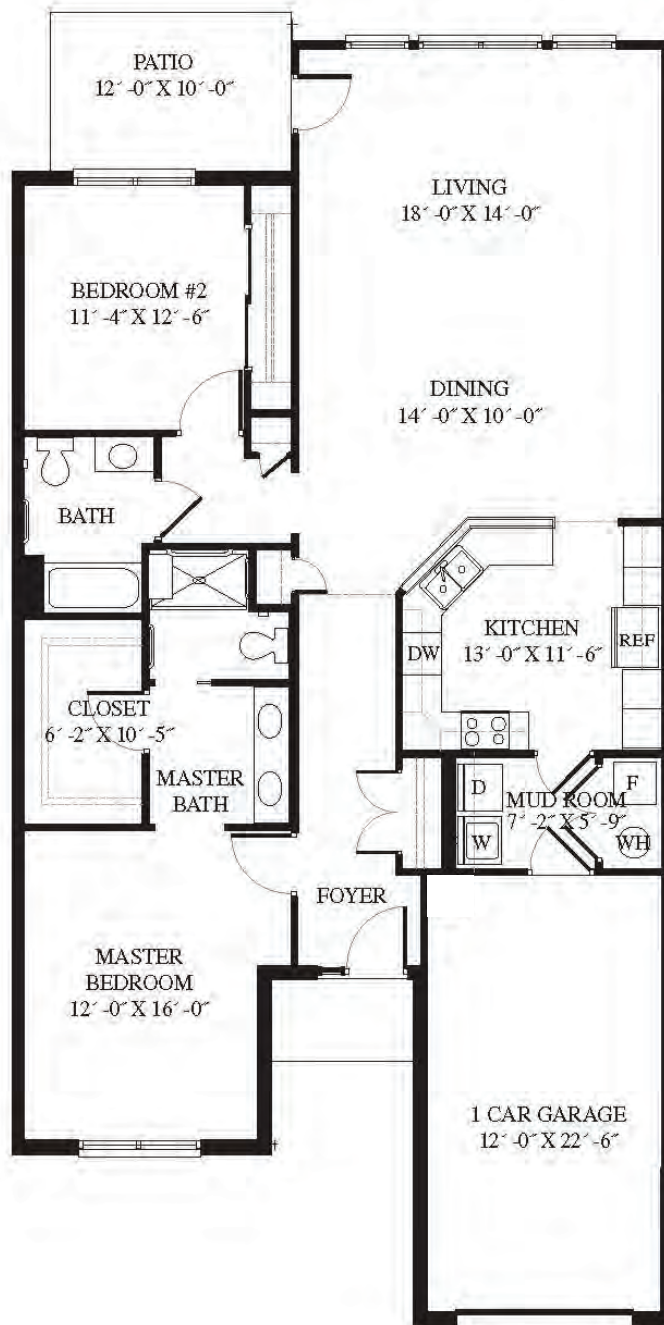
Note: All dimensions are approximate.

5343 Hamilton Avenue | Cincinnati, OH 45224 | 513-853-2000 | www.lec.org



Grant

1600 Square Footage



Entrance Fee _____
 2nd Person Fee _____
 Total Entrance Fee _____
 Monthly Service Fee _____

Note: All dimensions are approximate.

5343 Hamilton Avenue | Cincinnati, OH 45224 | 513-853-2000 | www.lec.org



Taft

2010 Square Footage



Entrance Fee _____
 2nd Person Fee _____
 Total Entrance Fee _____
 Monthly Service Fee _____

Note: All dimensions are approximate.

5343 Hamilton Avenue | Cincinnati, OH 45224 | 513-853-2000 | www.lec.org

